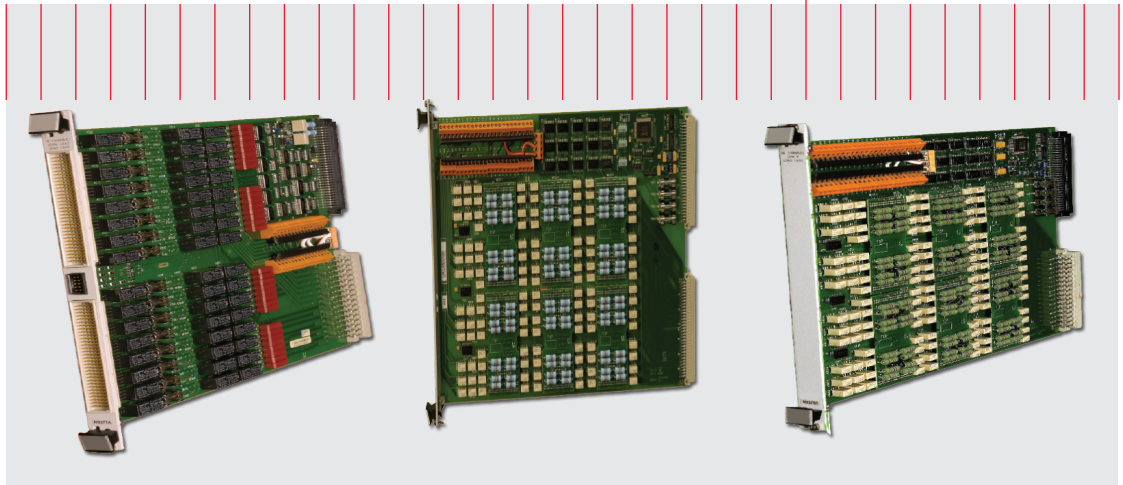


Keysight Technologies

TS-5000 Family

Multi-Channel Load Cards

Data Sheet



Figures 1, 2 and 3 below exhibit circuit diagrams on how single, dual and quad-load load cards function respectively.

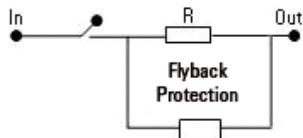


Figure 1. Single-load

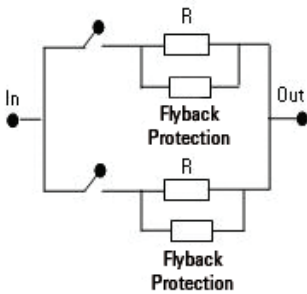


Figure 2. Dual-load

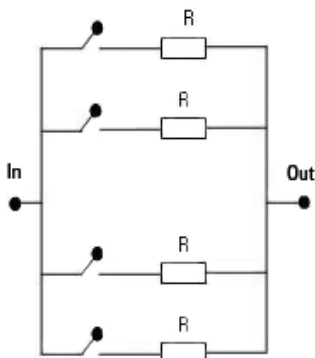


Figure 3. Quad-load

Keysight Technologies, Inc. TS-5000 family load cards are a cost-effective and reliable set of multi-channelled load cards designed specifically for automotive functional testing.

It offers a wide range of load cards with up to 48 addressable channels, covering from low resistance to high current. The high current load cards offer flyback protection while utilizing reliable reed relays with power bus to supply power to load.

The TS-5000 family offers single, dual and quad-load load cards, each allowing you to connect to internal and externally defined load values.

The multiple types of load cards offered are categorized as follows:

Single-Load Load Cards

E6175A: 8-channel, single-load

E6176A: 16-channel, single-load

E6177A: 24-channel, single-load

E6177B: 24-channel, single-load

E6178A: 8-channel, single-load

Dual-Load Load Cards

N9377A: 16-channel, dual-load

N9379A: 48-channel, dual-load

Quad-Load Load Card

N9378A: 24-channel, quad-load

The TS-5000 family load cards work well with Keysight E6198 programmable Switch/Load Unit (SLU), with up to 21 slots of optional Keysight plug in cards. This programmable SLU can also be used for instrumentation switching, as well as switching power supply and loads to the electronic control module (ECM).

With the TS-5000 family load cards, your test engineers can choose their own load devices for any specific testing requirement that they may have.

A flexibility like this allows the application of loads that are more than just resistors, for example, reactive loads with inductors or capacitors can also be fitted for an ECM application that requires emulation.

The TS-5000 family load cards also have the ability to provide flyback protection for high current handling.

General Specifications

Keysight Load Cards Specifications

Function	E6175A	E6176A	E6177A	E6177B	E6178A	N9377A	N9378A	N9379A
Number of channels (maximum)	8	16	24	24	8	16, dual-load	24, quad-load	48, dual-load
Number of channels - unshared relays	4	16	24	24	8	16	24	48
Maximum current per channel	7.5 A (15 A peak)	7.5 A (15 A peak)	3 A	3 A	30 A	7.5 A (15 A peak)	2 A	2 A
Current measuring with sense resistor	Yes	Yes	No	Yes	No	Yes	No	No
Current measuring with current transducer	Yes	No	No	No	Yes	No	No	No
Flyback protection available (user installed)	Yes	Yes	No	No	Yes	Yes	No	No
Engineered for application	Inductive load	Common load	Low current	Low current	High current	High current dual-load	Low current quad-load	Low current quad-load

Switching Specifications

Keysight Single-Load Load Cards Specifications

Function	E6175A	E6176A	E6177A & E6177B	E6178B
Path resistance from power bus to load card connect	0.25 Ω maximum	0.4 Ω maximum	0.5 Ω maximum	0.030 Ω typical, 0.075 Ω maximum
Load path relay operate/release time	10/8 msec typical, 16/10 msec maximum, 30 cps maximum	10/8 msec typical, 16/10 msec maximum, 30 cps maximum	3.3/2.4 msec typical, 8/8 msec maximum, 10 cps maximum	15/10 msec typical, 20 cps maximum without load, 6 cpm maximum with rated load
Peak voltage to earth	60 V continuous 500 V maximum transient, non-switching (delays to < 60 V in 200 mS)	60 V continuous 500 V maximum transient, non-switching (delays to < 60 V in 200 mS)	60 V continuous 500 V maximum transient, non-switching (delays to < 60 V in 200 mS)	60 V continuous
Load carry/switching current (per channel)	7.5 A maximum non-switching, continuous	7.5 A maximum non-switching, continuous	3 A maximum	30 A maximum ⁽¹⁾
Load carry peak current (non-switching)	15 A maximum, (< 100 msec, < 2% duty cycle)	15 A maximum, (< 100 msec, < 2% duty cycle)	6 A maximum, (< 100 msec, < 2% duty cycle)	200 A maximum, (< 100 mS, < 2% duty cycle ⁽¹⁾)
Load switching power	150 W maximum, resistive load	150 W maximum, resistive load	60 W maximum, resistive load	500 W maximum @ 25 Vdc maximum resistive load; 100 W maximum @ 40 Vdc maximum resistive load
Load switching voltage	60 V maximum	60 V maximum	60 V maximum	40 V maximum, V*I not to exceed load switching power ⁽²⁾
Minimum permissible load	1 mA, 1 V	1 mA, 1 V	10 μ A, 10 mV DC	N/A
Basic current sense accuracy with standard 0.05 W sense resistor	0.1% maximum	0.1% maximum	0.1% maximum (for E6177B only)	0.1% maximum

(1) One channel at a time. Special accessories required to support multi-channel 30 A load switching at any one time.

(2) Exclusive of load

Keysight Multi-Load Load Cards Specifications

Function	N9377A	N9378A	N9379A
Switch topology	16-channel / 2 loads per channel, off-board loads	24-channel / 4 loads per channel with common, on-board loads	48-channel / 2 loads per channel with common, on-board loads
Path resistance channel to common	N/A	0.130 Ω maximum	0.300 Ω maximum
Path resistance from power bus to load card connect	0.4 Ω maximum	0.5 Ω maximum	0.5 Ω maximum
Load path relay operate/release time	10/5 msec maximum, 30 cps maximum	4/4 msec maximum, 10 cps maximum	4/4 msec max, 10 cps maximum
Peak voltage to earth	60 V continuous 500 V maximum transient, non-switching (delays to < 60 V in 200 mS)	60 V continuous 500 V maximum transient, non-switching (delays to < 60 V in 200 mS)	60 V continuous 200 V maximum transient, non-switching (delays to < 60 V in 200 mS)
Load carry/switching current (per channel)	7.5 A maximum non-switching, continuous	2 A maximum	2 A maximum
Load carry peak current	15 A maximum, non-switching (< 100 msec, < 2% duty cycle)	1 A maximum	1 A maximum
Load switching power	150 W maximum, resistive load	N/A	N/A
Load switching voltage	60 V maximum	30 V maximum (relay switching)	30 V maximum (relay switching)
Minimum permissible load	10 mA, 5 V	10 μ A, 10 mV DC	10 μ A, 10 mV DC
Basic current sense accuracy with standard 0.05 Ω sense resistor	0.1% maximum	N/A	N/A
Basic current sense accuracy with different amplifier engaged ($V_{cm} = 0$ V)	0.2% + 30 mA	N/A	N/A
Basic current sense accuracy with different amplifier engaged ($V_{cm} = 16$ V)	0.2% + 100 mA	N/A	N/A
Isense differential amplifier 3 dB bandwidth	500 kHz typical	N/A	N/A
Isense differential amplifier slew rate	40 A/ μ S typical	N/A	N/A
Power dissipation, individual load mounted on load card	N/A	2 W maximum, each load	2 W maximum, each load
Average power for loads mounted on load card	N/A	20 W maximum total, per card	20 W maximum total, per card

(1) One channel at a time. Special accessories required to support multi-channel 30 A load switching at any one time.

(2) Exclusive of load

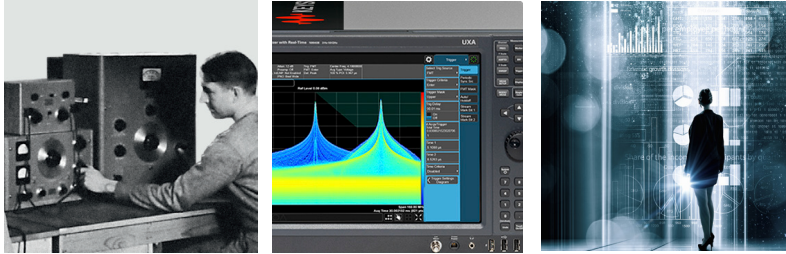
Safety & CE Compliance

Safety	IEC 61010-1 (1990)+A2: 1995/EN61010-1 : 1993+A2 : 1995 CSA C22.2 #1010.1 (1992) UL 3111
EMC	CISPR 11: 1990/EN55011 1991: Group1, Class A EN50082-1: 1992 IEC 61000-4-2: 1995/: 4kV CD IEC 61000-4-3: 1995/: 3V/m IEC 61000-4-4: 1995/: 1kV power line

Evolving Since 1939

Our unique combination of hardware, software, services, and people can help you reach your next breakthrough. We are unlocking the future of technology.

From Hewlett-Packard to Agilent to Keysight.



For more information on Keysight Technologies' products, applications or services, please contact your local Keysight office. The complete list is available at:

www.keysight.com/find/contactus

Americas

Canada	(877) 894 4414
Brazil	55 11 3351 7010
Mexico	001 800 254 2440
United States	(800) 829 4444

Asia Pacific

Australia	1 800 629 485
China	800 810 0189
Hong Kong	800 938 693
India	1 800 11 2626
Japan	0120 (421) 345
Korea	080 769 0800
Malaysia	1 800 888 848
Singapore	1 800 375 8100
Taiwan	0800 047 866
Other AP Countries	(65) 6375 8100

Europe & Middle East

Austria	0800 001122
Belgium	0800 58580
Finland	0800 523252
France	0805 980333
Germany	0800 6270999
Ireland	1800 832700
Israel	1 809 343051
Italy	800 599100
Luxembourg	+32 800 58580
Netherlands	0800 0233200
Russia	8800 5009286
Spain	800 000154
Sweden	0200 882255
Switzerland	0800 805353
	Opt. 1 (DE)
	Opt. 2 (FR)
	Opt. 3 (IT)
United Kingdom	0800 0260637

For other unlisted countries:

www.keysight.com/find/contactus
(BP-9-7-17)

DEKRA Certified
ISO 9001 Quality Management System

www.keysight.com/go/quality
Keysight Technologies, Inc.
DEKRA Certified ISO 9001:2015
Quality Management System

myKeysight

myKeysight

www.keysight.com/find/mykeysight

A personalized view into the information most relevant to you.

http://www.keysight.com/find/emt_product_registration

Register your products to get up-to-date product information and find warranty information.

KEYSIGHT SERVICES
Accelerate Technology Adoption.
Lower costs.

Keysight Services

www.keysight.com/find/service

Keysight Services can help from acquisition to renewal across your instrument's lifecycle. Our comprehensive service offerings—one-stop calibration, repair, asset management, technology refresh, consulting, training and more—helps you improve product quality and lower costs.

Keysight Assurance Plans

www.keysight.com/find/AssurancePlans

Up to ten years of protection and no budgetary surprises to ensure your instruments are operating to specification, so you can rely on accurate measurements.

Keysight Channel Partners

www.keysight.com/find/channelpartners

Get the best of both worlds: Keysight's measurement expertise and product breadth, combined with channel partner convenience.

www.keysight.com/find/automotive



This information is subject to change without notice.
© Keysight Technologies, 2017
Published in USA, December 1, 2017
5989-5822EN
www.keysight.com